

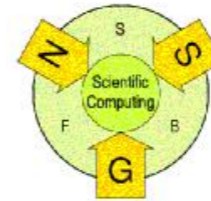
Multigrid Preconditioned Solvers for Some Elastoplastic Type Problems

Johanna Kienesberger

Jan Valdman



SFB F013
Johannes Kepler University
Linz, Austria



Outline

- Motivation
- Single yield plasticity
 - Modeling
 - Algorithm for isotropic hardening
 - Numerical results
- Multi yield plasticity
 - What is multi yield?
 - Difficulties in symbolic calculations
- Conclusions and outlook

Motivation

Computing solutions numerically avoids e.g. expensive crash tests:



Motivation

Computing solutions numerically avoids e.g. expensive crash tests:



Literature:

- Plasticity: Carstensen, Han/Reddy
- Variational inequalities: Ekeland/Teman, Glowinski et al.
- FEM and multigrid: Braess, Bramble, Brenner/Scott, Hackbusch

Modeling

Find $u \in W^{1,2}(0, T; H_0^1(\Omega)^n)$, $p \in W^{1,2}(0, T; L^2(\Omega, \mathbb{R}^{n \times n}))$,
 $\sigma \in W^{1,2}(0, T; L^2(\Omega, \mathbb{R}^{n \times n}))$, $\alpha \in W^{1,2}(0, T; L^2(\Omega, \mathbb{R}^m))$ such that

$$-\operatorname{div} \sigma = b$$

$$\sigma = \sigma^T$$

$$\varepsilon(u) = \frac{1}{2} (\nabla u + (\nabla u)^T)$$

$$\varepsilon(u) = \mathbb{C}^{-1} \sigma + p$$

$$\varphi(\sigma, \alpha) < \infty$$

$$\dot{p} : (\tau - \sigma) - \dot{\alpha} : (\beta - \alpha) \leq \varphi(\tau, \beta) - \varphi(\sigma, \alpha)$$

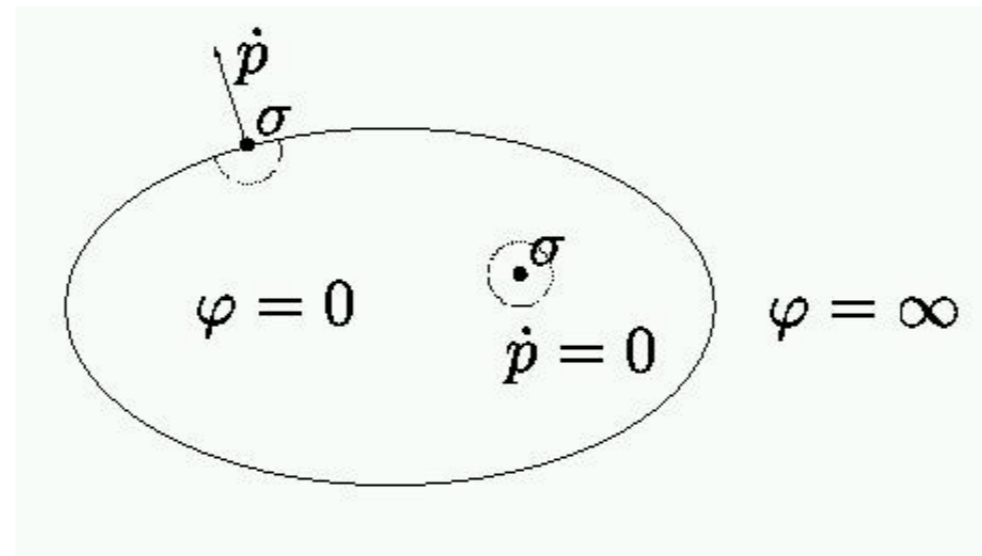
are satisfied in the variational sense with $(u, p, \sigma, \alpha)(0) = 0$ for all (τ, β) .

b and \mathbb{C}^{-1} are given, $b(0) = 0$.

Normality law

Formulas without α (perfect plasticity)

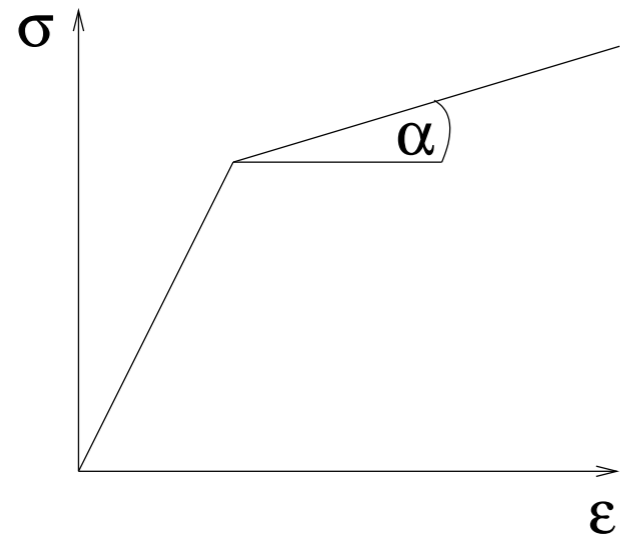
$$\begin{aligned}\varphi(\sigma) &< \infty \\ \dot{p} : (\tau - \sigma) &\leq \varphi(\tau) - \varphi(\sigma)\end{aligned}$$



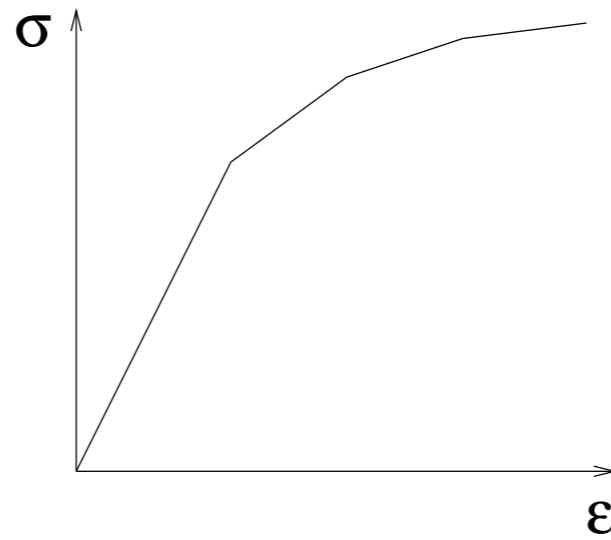
Numeric-analytic steps

- Time discretization: $t_1 = t_0 + \Delta t$
- Reformulation of the problem using functional-analytic arguments
(switching arguments in variational inequalities using a dual functional)
- Equivalent minimization problem

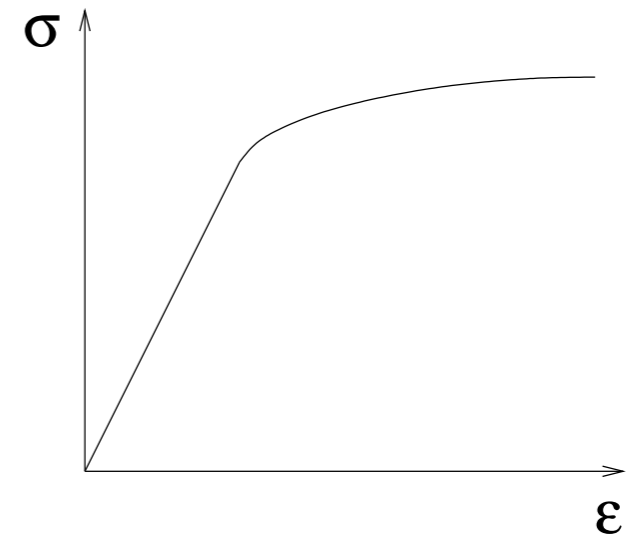
Hysteresis curves



Single yield



Multi yield



Reality

Minimization problem for isotropic hardening

The minimization problem is

$$f(u, p) := \frac{1}{2} \int_{\Omega} \mathbb{C}[\varepsilon(u) - p] : (\varepsilon(u) - p) dx + \frac{1}{2} \int_{\Omega} (\alpha_0 + \sigma_y H |p - p_0|)^2 dx + \int_{\Omega} \sigma_y |p - p_0| dx - \int_{\Omega} b(t) u dx$$

under the constraint $\text{tr}(p - p_0) = 0$

Minimization problem for isotropic hardening

The minimization problem is

$$f(u, p) := \frac{1}{2} \int_{\Omega} \mathbb{C}[\varepsilon(u) - p] : (\varepsilon(u) - p) dx + \frac{1}{2} \int_{\Omega} (\alpha_0 + \sigma_y H |p - p_0|)^2 dx + \int_{\Omega} \sigma_y |p - p_0| dx - \int_{\Omega} b(t) u dx$$

under the constraint $\text{tr}(p - p_0) = 0$.

New variable: $\tilde{p} = p - p_0$

Minimization problem for isotropic hardening

The minimization problem is

$$f(u, p) := \frac{1}{2} \int_{\Omega} \mathbb{C}[\varepsilon(u) - p] : (\varepsilon(u) - p) dx + \frac{1}{2} \int_{\Omega} (\alpha_0 + \sigma_y H |p - p_0|)^2 dx + \int_{\Omega} \sigma_y |p - p_0| dx - \int_{\Omega} b(t) u dx$$

under the constraint $\text{tr}(p - p_0) = 0$.

New variable: $\tilde{p} = p - p_0$

A differentiable approximation of $|\tilde{p}|$:

$$|p|_{\epsilon} := \begin{cases} |p| & \text{if } |p| \geq \epsilon \\ \frac{1}{2\epsilon}|p|^2 + \frac{\epsilon}{2} & \text{if } |p| < \epsilon \end{cases}$$

Minimization problem for isotropic hardening

The minimization problem is

$$f(u, p) := \frac{1}{2} \int_{\Omega} \mathbb{C}[\varepsilon(u) - p] : (\varepsilon(u) - p) dx + \frac{1}{2} \int_{\Omega} (\alpha_0 + \sigma_y H |p - p_0|)^2 dx + \int_{\Omega} \sigma_y |p - p_0| dx - \int_{\Omega} b(t) u dx$$

under the constraint $\text{tr}(p - p_0) = 0$.

New variable: $\tilde{p} = p - p_0$

A differentiable approximation of $|\tilde{p}|$:

$$|p|_{\epsilon} := \begin{cases} |p| & \text{if } |p| \geq \epsilon \\ \frac{1}{2\epsilon}|p|^2 + \frac{\epsilon}{2} & \text{if } |p| < \epsilon \end{cases}$$

Minimization strategy in each time step:

$$u^{k+1} = \operatorname{argmin}_v \min_q \bar{f}(v, q) = \operatorname{argmin}_v \tilde{f}(v, q_{\text{opt}}(v))$$

Then $p = p_0 + \tilde{p}$

Minimization in u

FEM-Discretization of the unconstrained objective is equivalent to

$$\frac{1}{2}(Bu - \tilde{p})^T \mathbb{C}(Bu - \tilde{p}) + \frac{1}{2}\tilde{p}^T \mathbb{H}(|\tilde{p}|_\epsilon)\tilde{p} - bu \longrightarrow \min!$$

Matrix notation:

$$\frac{1}{2} \begin{pmatrix} u \\ \tilde{p} \end{pmatrix}^T \begin{pmatrix} B^T \mathbb{C} B & -B^T \mathbb{C} \\ -\mathbb{C} B & \mathbb{C} + \mathbb{H} \end{pmatrix} \begin{pmatrix} u \\ \tilde{p} \end{pmatrix} + \begin{pmatrix} -b - B^T \mathbb{C} p_0 \\ \mathbb{C} p_0 \end{pmatrix}^T \begin{pmatrix} u \\ \tilde{p} \end{pmatrix} \longrightarrow \min!$$

Minimization in u

FEM-Discretization of the unconstrained objective is equivalent to

$$\frac{1}{2}(Bu - \tilde{p})^T \mathbb{C}(Bu - \tilde{p}) + \frac{1}{2}\tilde{p}^T \mathbb{H}(|\tilde{p}|_\epsilon)\tilde{p} - bu \longrightarrow \min!$$

Matrix notation:

$$\frac{1}{2} \begin{pmatrix} u \\ \tilde{p} \end{pmatrix}^T \begin{pmatrix} B^T \mathbb{C} B & -B^T \mathbb{C} \\ -\mathbb{C} B & \mathbb{C} + \mathbb{H} \end{pmatrix} \begin{pmatrix} u \\ \tilde{p} \end{pmatrix} + \begin{pmatrix} -b - B^T \mathbb{C} p_0 \\ \mathbb{C} p_0 \end{pmatrix}^T \begin{pmatrix} u \\ \tilde{p} \end{pmatrix} \longrightarrow \min!$$

Necessary condition:

$$\begin{pmatrix} B^T \mathbb{C} B & -B^T \mathbb{C} \\ -\mathbb{C} B & \mathbb{C} + \mathbb{H} \end{pmatrix} \begin{pmatrix} u \\ \tilde{p} \end{pmatrix} + \begin{pmatrix} -b - B^T \mathbb{C} p_0 \\ \mathbb{C} p_0 \end{pmatrix} = 0$$

The Schur-Complement system in u with the matrix

$$S = B^T (\mathbb{C} - \mathbb{C}(\mathbb{C} + \mathbb{H})^{-1} \mathbb{C}) B$$

is solved by **multigrid preconditioned conjugate gradient method**.

Minimization in \tilde{p}

The objective in each integration point writes as

$$F(\tilde{p}) = \frac{1}{2}\tilde{p}^T \mathbb{C}\tilde{p} + p_0^T \mathbb{C}\tilde{p} - \tilde{p}^T \mathbb{C}\varepsilon(u) + \frac{1}{2}\sigma_y^2 H^2 |\tilde{p}|^2 + \sigma_y(1 + \alpha_0 H) |\tilde{p}|_\epsilon$$

\tilde{p} is determined by a modified Newton Algorithm in each integration point.

Are there symbolic methods (as in the unregularized case)?

What about the constraint?

Constraint $\text{tr } \tilde{p} = 0$

in 2D: $\tilde{p}_{22} = -\tilde{p}_{11}$, in 3D: $\tilde{p}_{33} = -\tilde{p}_{11} - \tilde{p}_{22}$.

Projection matrix P: $\tilde{p} = P\bar{p}$

$$2\text{D: } P = \begin{pmatrix} 1 & 0 \\ -1 & 0 \\ 0 & 1 \end{pmatrix}, \quad 3\text{D: } P = \begin{pmatrix} 1 & 0 & 0 & 0 & 0 \\ 0 & 1 & 0 & 0 & 0 \\ -1 & -1 & 0 & 0 & 0 \\ 0 & 0 & 1 & 0 & 0 \\ 0 & 0 & 0 & 1 & 0 \\ 0 & 0 & 0 & 0 & 1 \end{pmatrix}$$

Modified Newton system:

$$P^T F''(\tilde{p}) P \bar{p} = P^T F'(\tilde{p})$$

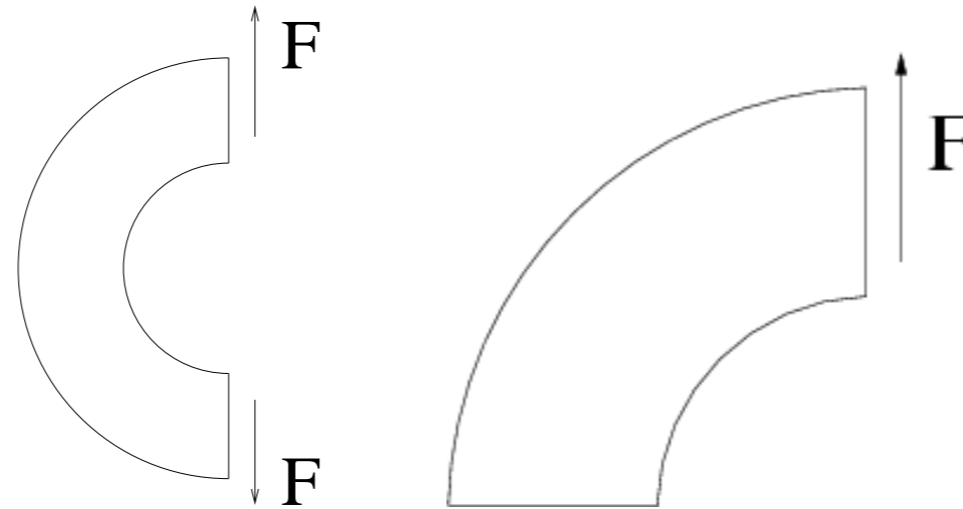
Modified Schur-Complement Matrix:

$$S = B^T (\mathbb{C} - \mathbb{C} P (P^T (\mathbb{C} + \mathbb{H}) P)^{-1} P^T \mathbb{C}) B$$

Numerical results - Quarter of a ring

FEM shape functions: u piecewise quadratic, p piecewise constant

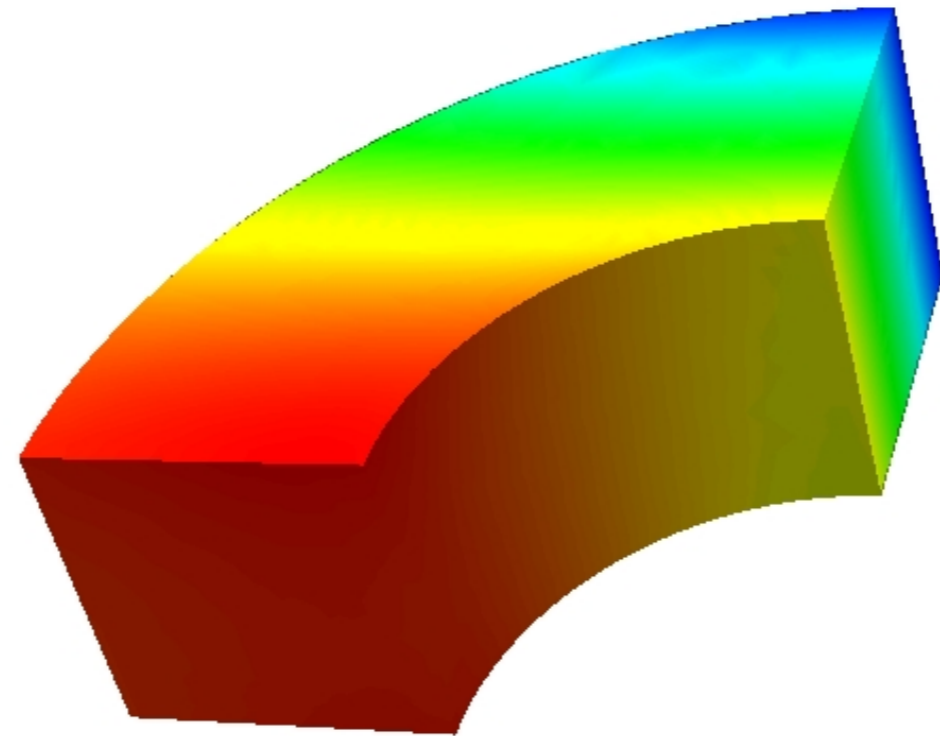
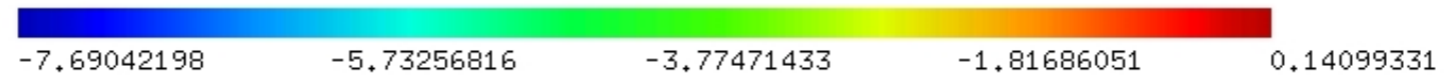
Symmetric problem:



Constants:

$E=1$, $\nu = 0.2$, $H = 0.01$, $\sigma_y = 1$, $F = 0.25$

Number of time steps: 10



Netgen 4.2

Displacement in x-direction

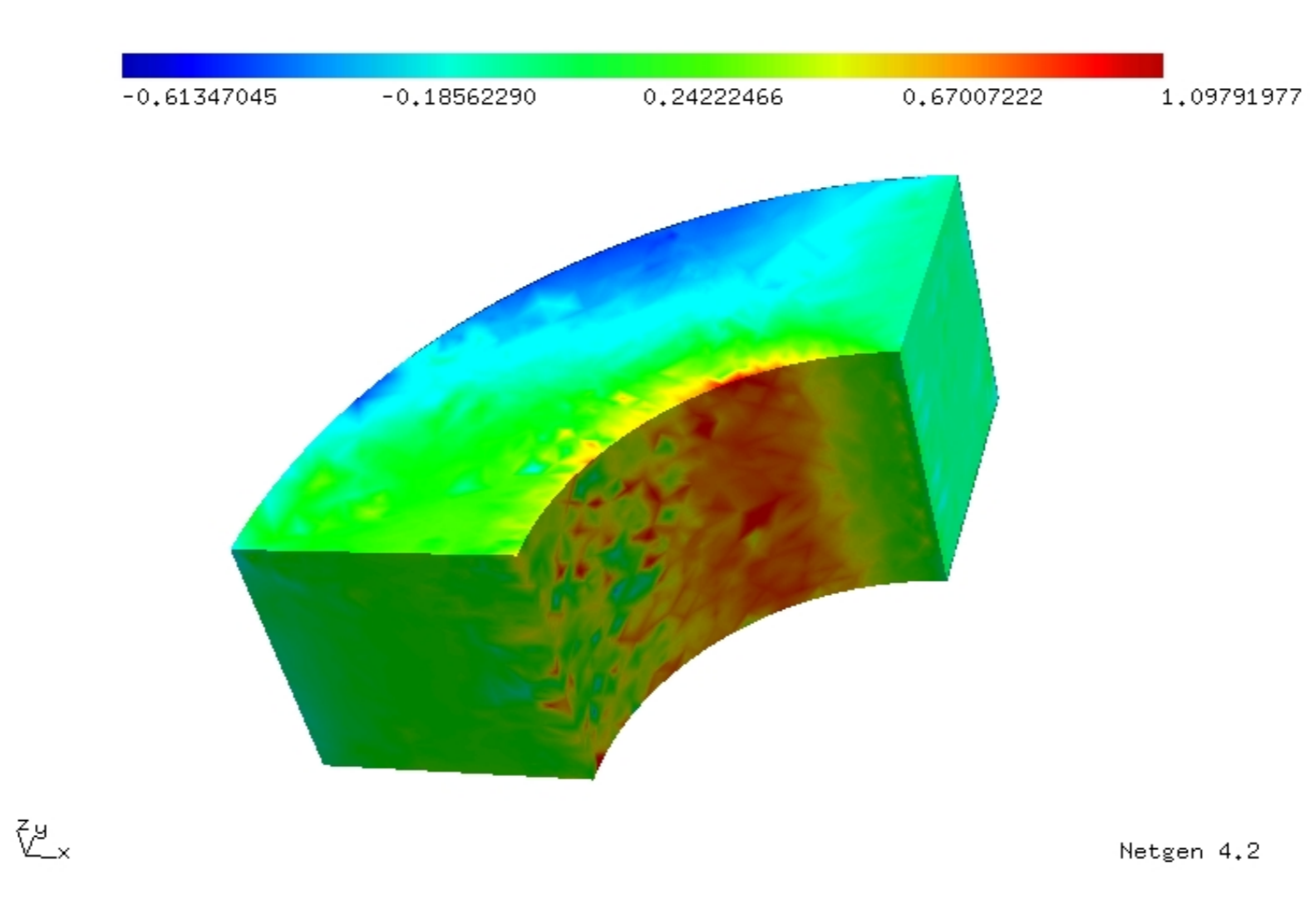


Figure 1: Stress in x-direction: σ_{11}

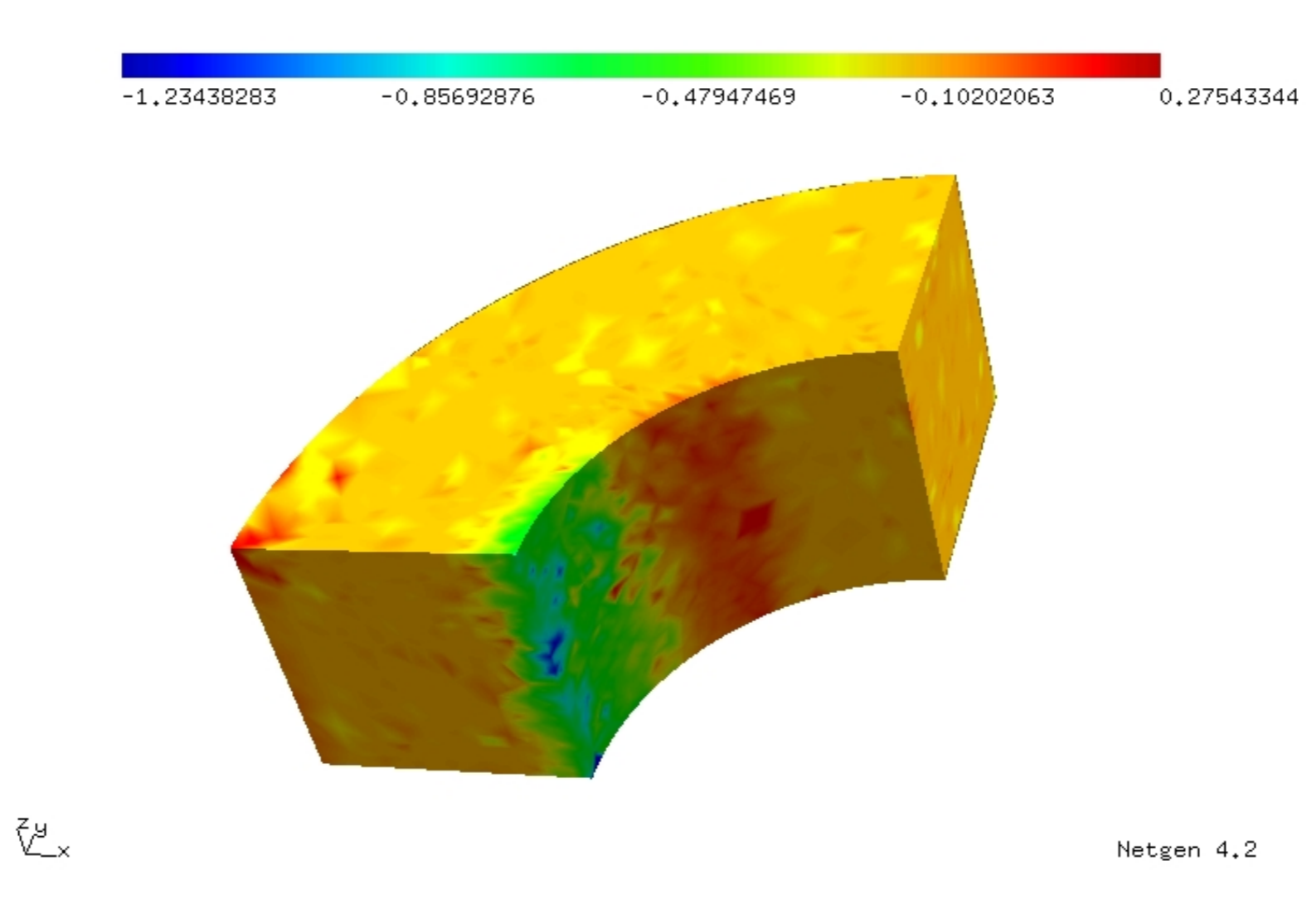


Figure 2: Plastic part of the strain in x-direction: p_{11}

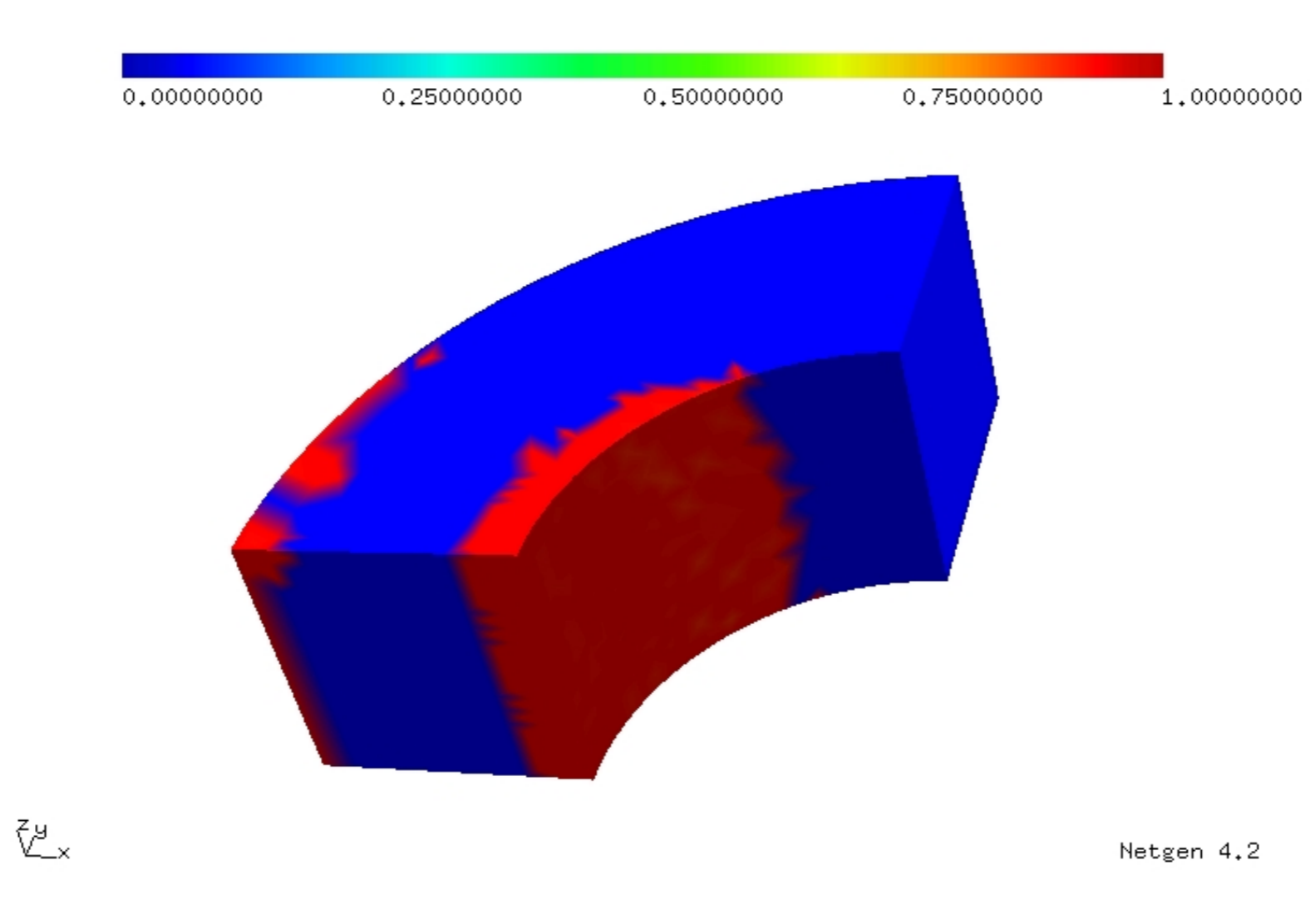


Figure 3: Plasticity domain

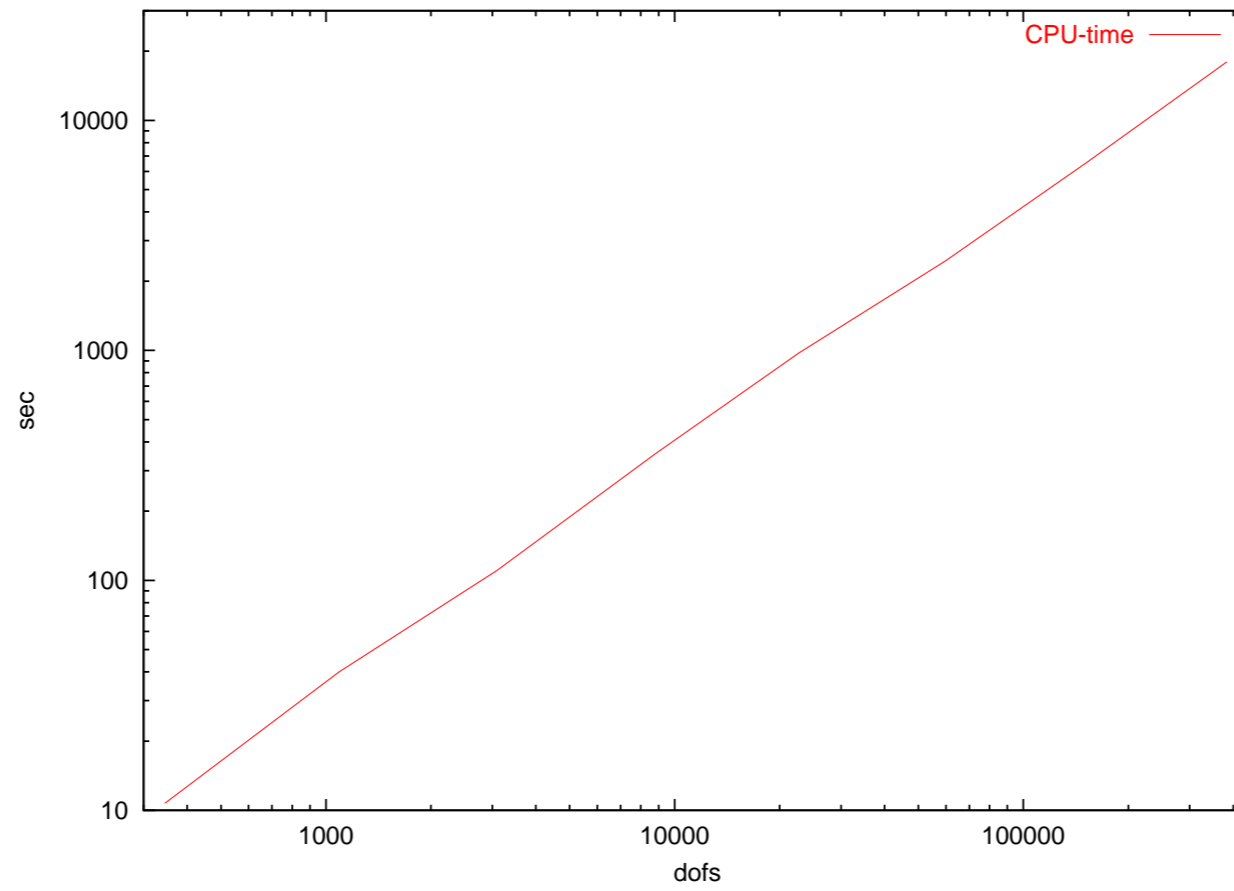


Figure 4: CPU-Time

Conclusions and outlook

We have considered:

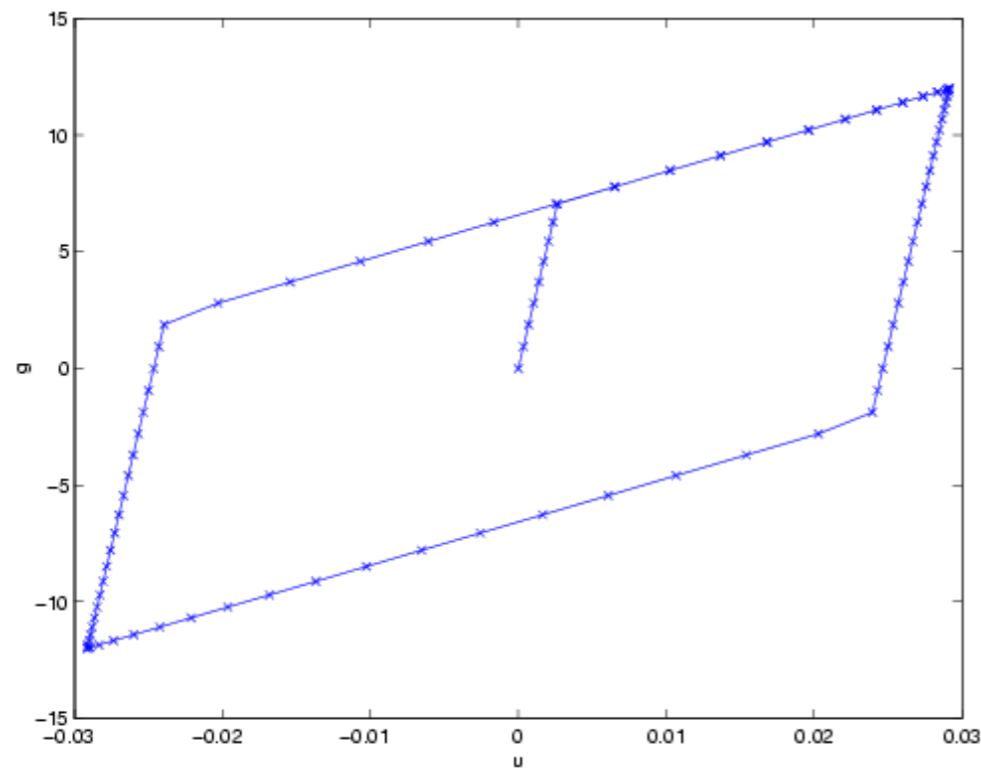
- Problem formulation and discretization
- Regularized minimization problem of isotropic hardening
- Minimization: 3D time-dependent algorithm

Future Work:

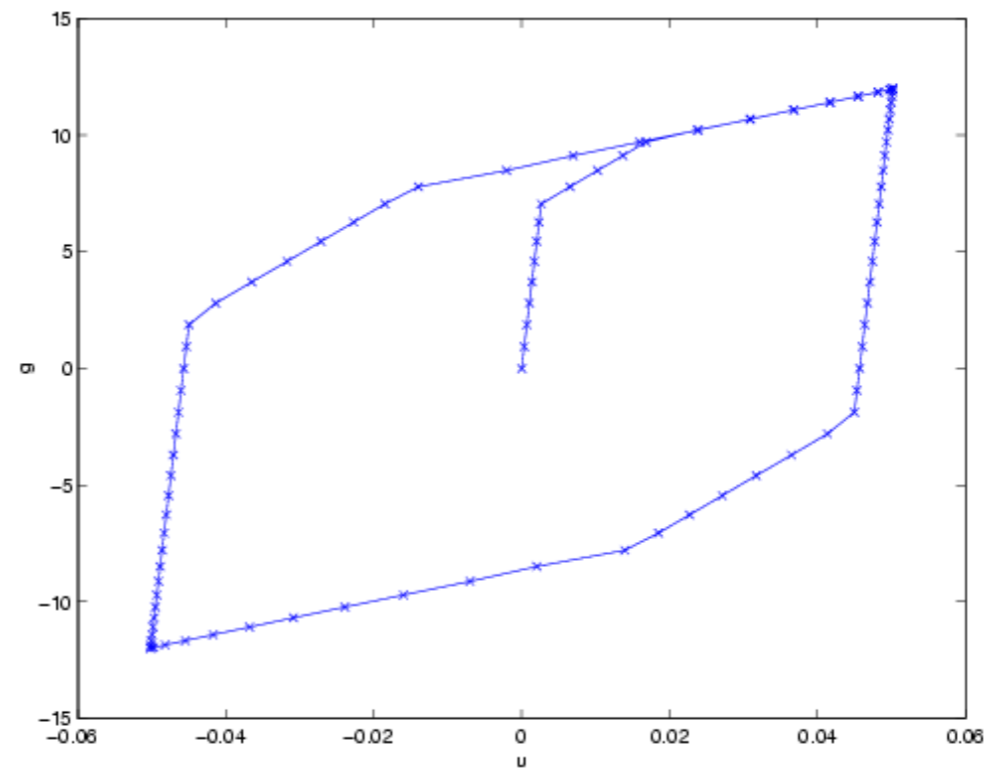
- Convergence proof
- Other hardening laws (multi-yield plasticity)
- Direct solver needed in inverse problems of plasticity
- Minimize p using symbolic methods?

Why Multi-yield (Two-yield) model?

- More realistic hysteresis stress-strain relation in materials!



Kinematic hardening model.



Two-yield hardening model.

Direct minimization problem

Kinematic hardening model:

$$f(Q) = \frac{1}{2}(\mathbb{C} + \mathbb{H})Q : Q - Q : A + \sigma^y \|Q\| \rightarrow \min$$

Direct minimization problem

Kinematic hardening model:

$$f(Q) = \frac{1}{2}(\mathbb{C} + \mathbb{H})Q : Q - Q : A + \sigma^y \|Q\| \rightarrow \min$$

Two-yield hardening model:

$$f \begin{pmatrix} Q_1 \\ Q_2 \end{pmatrix} = \frac{1}{2} \begin{pmatrix} \mathbb{C} + \mathbb{H}_1 & \mathbb{C} \\ \mathbb{C} & \mathbb{C} + \mathbb{H}_2 \end{pmatrix} \begin{pmatrix} Q_1 \\ Q_2 \end{pmatrix} : \begin{pmatrix} Q_1 \\ Q_2 \end{pmatrix} - \begin{pmatrix} Q_1 \\ Q_2 \end{pmatrix} : \begin{pmatrix} A_1 \\ A_2 \end{pmatrix} + \sigma_1^y \|Q_1\| + \sigma_2^y \|Q_2\| \rightarrow \min$$

Direct minimization problem

Kinematic hardening model:

$$f(Q) = \frac{1}{2}(\mathbb{C} + \mathbb{H})Q : Q - Q : A + \sigma^y \|Q\| \rightarrow \min$$

$$\text{minimizer } P = \frac{(\| \text{dev } A \| - \sigma^y)_+}{2\mu + h} \frac{\text{dev } A}{\| \text{dev } A \|}$$

Two-yield hardening model:

$$f \begin{pmatrix} Q_1 \\ Q_2 \end{pmatrix} = \frac{1}{2} \begin{pmatrix} \mathbb{C} + \mathbb{H}_1 & \mathbb{C} \\ \mathbb{C} & \mathbb{C} + \mathbb{H}_2 \end{pmatrix} \begin{pmatrix} Q_1 \\ Q_2 \end{pmatrix} : \begin{pmatrix} Q_1 \\ Q_2 \end{pmatrix} - \begin{pmatrix} Q_1 \\ Q_2 \end{pmatrix} : \begin{pmatrix} A_1 \\ A_2 \end{pmatrix} + \sigma_1^y \|Q_1\| + \sigma_2^y \|Q_2\| \rightarrow \min$$

Direct minimization problem

Kinematic hardening model:

$$f(Q) = \frac{1}{2}(\mathbb{C} + \mathbb{H})Q : Q - Q : A + \sigma^y \|Q\| \rightarrow \min$$

$$\text{minimizer } P = \frac{(\| \text{dev } A \| - \sigma^y)_+}{2\mu + h} \frac{\text{dev } A}{\| \text{dev } A \|}$$

Two-yield hardening model:

$$f \begin{pmatrix} Q_1 \\ Q_2 \end{pmatrix} = \frac{1}{2} \begin{pmatrix} \mathbb{C} + \mathbb{H}_1 & \mathbb{C} \\ \mathbb{C} & \mathbb{C} + \mathbb{H}_2 \end{pmatrix} \begin{pmatrix} Q_1 \\ Q_2 \end{pmatrix} : \begin{pmatrix} Q_1 \\ Q_2 \end{pmatrix} - \begin{pmatrix} Q_1 \\ Q_2 \end{pmatrix} : \begin{pmatrix} A_1 \\ A_2 \end{pmatrix} + \sigma_1^y \|Q_1\| + \sigma_2^y \|Q_2\| \rightarrow \min$$

$$\text{minimizer } (P_1, P_2) = ?$$

Direct minimization problem: Two-yield model - analytical approach

Lemma: Let $f(P) = \min_Q f(Q)$, $P = (P_1, P_2)$, If $P_1 \neq 0, P_2 \neq 0 \Rightarrow \|P_2\|$ is a root of a 8-th degree polynomial.

Direct minimization problem: Two-yield model - analytical approach

Lemma: Let $f(P) = \min_Q f(Q)$, $P = (P_1, P_2)$, If $P_1 \neq 0, P_2 \neq 0 \Rightarrow \|P_2\|$ is a root of a 8-th degree polynomial.

Proof: f has a subdifferential, i.e., $\partial f(P) = (\hat{C} + \hat{H})P - A + \partial\|\cdot\|_{\sigma^y}(P)$

Minimum condition on P : $0 \in \partial f(P) \Leftrightarrow A - (\hat{C} + \hat{H})P \in \partial\|\cdot\|_{\sigma^y}(P)$

In case $P_1 \neq 0, P_2 \neq 0$ is $\partial\|\cdot\|_{\sigma^y}(P) = \left\{ \sigma_1^y \frac{P_1}{\|P_1\|}, \sigma_2^y \frac{P_2}{\|P_2\|} \right\}$

Direct minimization problem: Two-yield model - analytical approach

Lemma: Let $f(P) = \min_Q f(Q)$, $P = (P_1, P_2)$, If $P_1 \neq 0, P_2 \neq 0 \Rightarrow \|P_2\|$ is a root of a 8-th degree polynomial.

Proof: f has a subdifferential, i.e., $\partial f(P) = (\hat{\mathbb{C}} + \hat{\mathbb{H}})P - A + \partial\|\cdot\|_{\sigma^y}(P)$

Minimum condition on P : $0 \in \partial f(P) \Leftrightarrow A - (\hat{\mathbb{C}} + \hat{\mathbb{H}})P \in \partial\|\cdot\|_{\sigma^y}(P)$

In case $P_1 \neq 0, P_2 \neq 0$ is $\partial\|\cdot\|_{\sigma^y}(P) = \left\{ \sigma_1^y \frac{P_1}{\|P_1\|}, \sigma_2^y \frac{P_2}{\|P_2\|} \right\}$

Nonlinear system in $P_1, P_2 \in \text{dev } \mathbb{R}_{sym}^{d \times d}$ with $\mu, h_1, h_2, \sigma_1^y, \sigma_2^y > 0$, $\text{dev } A_1, \text{dev } A_2 \in \text{dev } \mathbb{R}_{sym}^{d \times d}$

$$\begin{pmatrix} \text{dev } A_1 \\ \text{dev } A_2 \end{pmatrix} - \begin{pmatrix} (2\mu + h_1)\mathbb{I} & 2\mu\mathbb{I} \\ 2\mu\mathbb{I} & (2\mu + h_2)\mathbb{I} \end{pmatrix} \begin{pmatrix} P_1 \\ P_2 \end{pmatrix} = \begin{pmatrix} \sigma_1^y \frac{P_1}{\|P_1\|} \\ \sigma_2^y \frac{P_2}{\|P_2\|} \end{pmatrix}$$

Direct minimization problem: Two-yield model - analytical approach

Lemma: Let $f(P) = \min_Q f(Q)$, $P = (P_1, P_2)$, If $P_1 \neq 0, P_2 \neq 0 \Rightarrow \|P_2\|$ is a root of a 8-th degree polynomial.

Proof: f has a subdifferential, i.e., $\partial f(P) = (\hat{C} + \hat{H})P - A + \partial\|\cdot\|_{\sigma^y}(P)$

Minimum condition on P : $0 \in \partial f(P) \Leftrightarrow A - (\hat{C} + \hat{H})P \in \partial\|\cdot\|_{\sigma^y}(P)$

In case $P_1 \neq 0, P_2 \neq 0$ is $\partial\|\cdot\|_{\sigma^y}(P) = \left\{ \sigma_1^y \frac{P_1}{\|P_1\|}, \sigma_2^y \frac{P_2}{\|P_2\|} \right\}$

Nonlinear system in $P_1, P_2 \in \text{dev } \mathbb{R}_{sym}^{d \times d}$ with $\mu, h_1, h_2, \sigma_1^y, \sigma_2^y > 0$, $\text{dev } A_1, \text{dev } A_2 \in \text{dev } \mathbb{R}_{sym}^{d \times d}$

$$\begin{pmatrix} \text{dev } A_1 \\ \text{dev } A_2 \end{pmatrix} - \begin{pmatrix} (2\mu + h_1)\mathbb{I} & 2\mu\mathbb{I} \\ 2\mu\mathbb{I} & (2\mu + h_2)\mathbb{I} \end{pmatrix} \begin{pmatrix} P_1 \\ P_2 \end{pmatrix} = \begin{pmatrix} \sigma_1^y \frac{P_1}{\|P_1\|} \\ \sigma_2^y \frac{P_2}{\|P_2\|} \end{pmatrix}$$

Subst. $\xi_1 = \|P_1\|, \xi_2 = \|P_2\|$ with $A, B, C, D, E, F, G, H, I, J \in \mathbb{R}$

$$\begin{aligned} A + B\xi_1 + C\xi_1^2 - (G + H\xi_1 + I\xi_2 + J\xi_1\xi_2)^2 &= 0 \\ D + E\xi_2 + F\xi_2^2 - (G + H\xi_1 + I\xi_2 + J\xi_1\xi_2)^2 &= 0 \end{aligned}$$

MAPLE \Rightarrow 8-th degree polynomial in $\xi_2 \Rightarrow$ **no analytical formula!**

Direct minimization problem: Two-yield model - analytical approach

Lemma: Let $f(P) = \min_Q f(Q)$, $P = (P_1, P_2)$, If $P_1 \neq 0, P_2 \neq 0 \Rightarrow \|P_2\|$ is a root of a 8-th degree polynomial.

Proof: f has a subdifferential, i.e., $\partial f(P) = (\hat{C} + \hat{H})P - A + \partial\|\cdot\|_{\sigma^y}(P)$

Minimum condition on P : $0 \in \partial f(P) \Leftrightarrow A - (\hat{C} + \hat{H})P \in \partial\|\cdot\|_{\sigma^y}(P)$

In case $P_1 \neq 0, P_2 \neq 0$ is $\partial\|\cdot\|_{\sigma^y}(P) = \left\{ \sigma_1^y \frac{P_1}{\|P_1\|}, \sigma_2^y \frac{P_2}{\|P_2\|} \right\}$

Nonlinear system in $P_1, P_2 \in \text{dev } \mathbb{R}_{sym}^{d \times d}$ with $\mu, h_1, h_2, \sigma_1^y, \sigma_2^y > 0$, $\text{dev } A_1, \text{dev } A_2 \in \text{dev } \mathbb{R}_{sym}^{d \times d}$

$$\begin{pmatrix} \text{dev } A_1 \\ \text{dev } A_2 \end{pmatrix} - \begin{pmatrix} (2\mu + h_1)\mathbb{I} & 2\mu\mathbb{I} \\ 2\mu\mathbb{I} & (2\mu + h_2)\mathbb{I} \end{pmatrix} \begin{pmatrix} P_1 \\ P_2 \end{pmatrix} = \begin{pmatrix} \sigma_1^y \frac{P_1}{\|P_1\|} \\ \sigma_2^y \frac{P_2}{\|P_2\|} \end{pmatrix}$$

Gröbner basis?

Direct minimization problem: Two-yield model - iterative approach

Algorithm (*): Given $tolerance \geq 0$.

(a) Choose $(P_1^0, P_2^0) \in dev \mathbb{R}_{sym}^{d \times d} \times dev \mathbb{R}_{sym}^{d \times d}$, set $i := 0$.

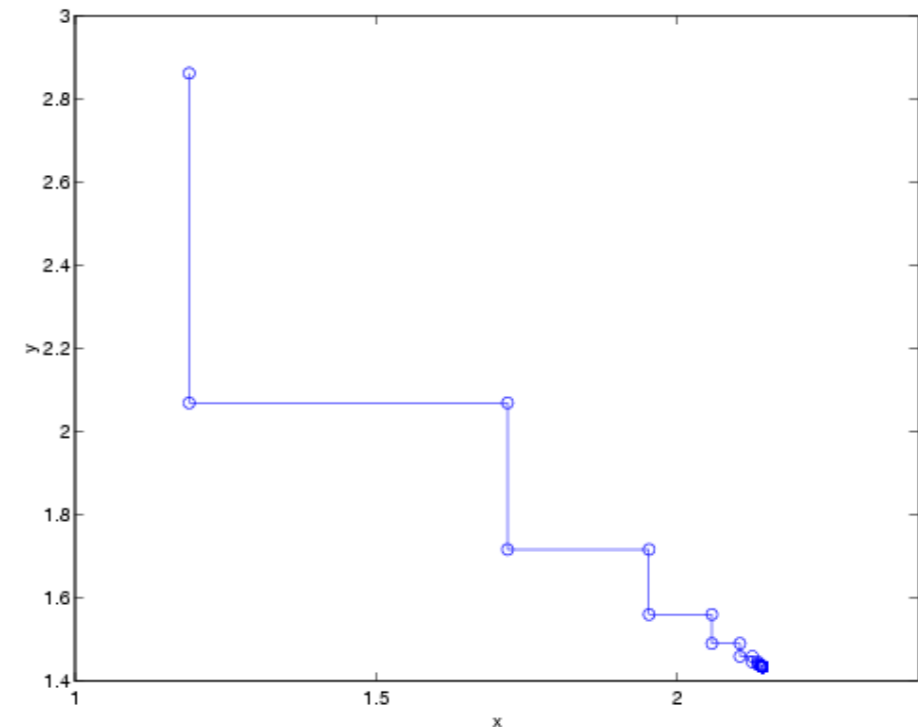
(b) Find $P_2^{i+1} \in dev \mathbb{R}_{sym}^{d \times d}$ s. t.

$$f(P_1^i, P_2^{i+1}) = \min_{Q_2 \in dev \mathbb{R}_{sym}^{d \times d}} f(P_1^i, Q_2).$$

(c) Find $P_1^{i+1} \in dev \mathbb{R}_{sym}^{d \times d}$ s. t.

$$f(P_1^{i+1}, P_2^{i+1}) = \min_{Q_1 \in dev \mathbb{R}_{sym}^{d \times d}} f(Q_1, P_2^{i+1}).$$

(d) If $\frac{\|P_1^{i+1} - P_1^i\| + \|P_2^{i+1} - P_2^i\|}{\|P_1^{i+1}\| + \|P_1^i\| + \|P_2^{i+1}\| + \|P_2^i\|} > tolerance$ set $i := i + 1$ and goto (b), otherwise output (P_1^{i+1}, P_2^{i+1}) .



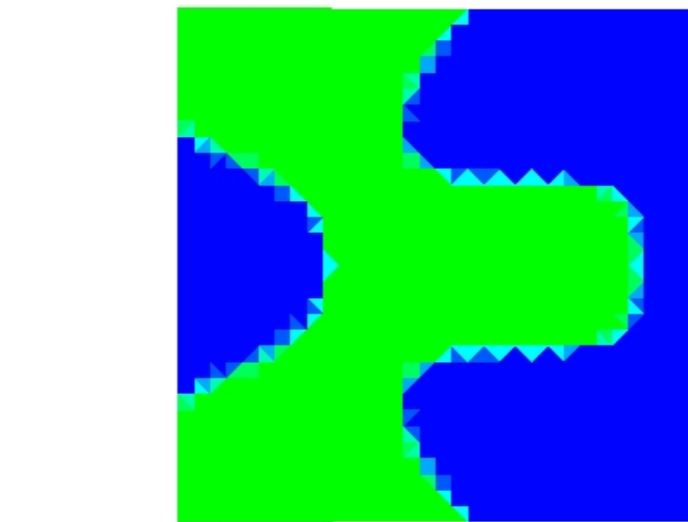
The approximations $P_1^i = (x^i, 0; 0, -x^i)$, $P_2^i = (y^i, 0; 0, -y^i)$, $i = 0, 1, \dots$ of Algorithm (*) in the $x - y$ coordinate system.

- global convergence with the rate $1/2$:

$$\|P_1^i - P_1\|^2 + \|P_2^i - P_2\|^2 \leq C_0 \cdot q^i$$

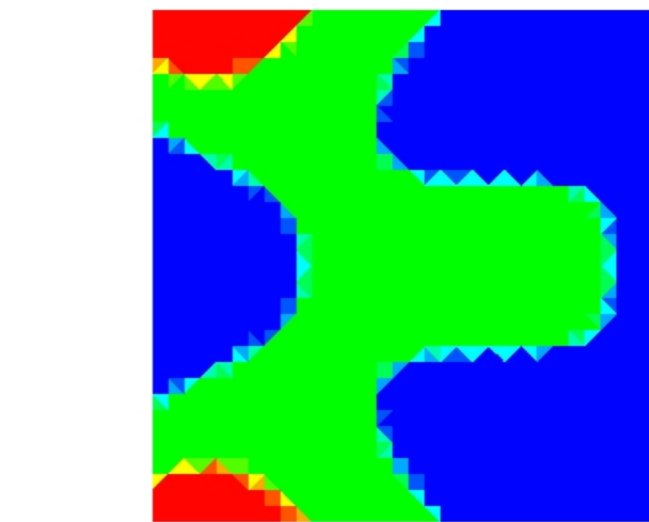
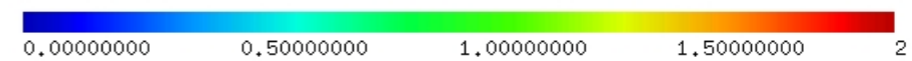
NGSOLVE calculations

Elastoplastic domains (blue -elastic, green - first plastic, red - second plastic)



Netgen 4.2

Kinematic hardening model.



Netgen 4.2

Two-yield hardening model.

Future work

- *Completion of NGSOLVE Two-yield plasticity package. (with F1301)*

Future work

- *Completion of NGSOLVE Two-yield plasticity package. (with F1301)*
- *Generalization to isotropic hardening or combined kinematic-isotropic hardening.*

Future work

- *Completion of NGSOLVE Two-yield plasticity package. (with F1301)*
- *Generalization to isotropic hardening or combined kinematic-isotropic hardening.*
- *Exact analytical formulas. (with F1302/F1303/F1304/F1305)*

Future work

- *Completion of NGSOLVE Two-yield plasticity package. (with F1301)*
- *Generalization to isotropic hardening or combined kinematic-isotropic hardening.*
- *Exact analytical formulas. (with F1302/F1303/F1304/F1305)*
- *Nonlinear hardening models, big deformations. (with F1308)*